



Fairview Park Preschool

Introductory Guide





Fairview Park Primary School
Nepondi Court, Fairview Park, SA 5126
Telephone: 8251 2717
Email: dl.1103.info@schools.sa.edu.au
www.fairviewparkps.sa.edu.au

Our school policies can be viewed via the school website

www.fairviewparkps.sa.edu.au

Department policies can be viewed via the DfE website

education.sa.gov.au



Government of South Australia
Department for Education

What is a Preschool?

Preschool is an integral part of Fairview Park Primary School and is committed to serving the needs of 0-5 year-old children and their families.

Preschool Services

- Playgroup
- Preschool sessions
- Access to other services such as Child and Family Health Service (CaFHS), Speech Pathology and other intervention support agencies
- Early Entry (conditions apply)

As preschool is the initial point of contact within the school, we recognise the importance of families and value their individuality. Families are warmly welcomed and we understand the important role families play in their child's development. The ongoing involvement of families in their child's experiences is encouraged. Families and educators work together to ensure the transition between home and preschool is successful.

As children move through playgroup and preschool, we encourage children to become independent, self-motivated and responsible. This is of great benefit upon their entry to school. We aim to provide a program which is fun, meaningful and relevant through activities and experiences which develop children's intellectual, physical, emotional and social wellbeing.

Regular communication between families and educators reflect the value we place upon the home/preschool partnerships. Informal chats, preschool/school newsletters, information board displays and interview times are the communication processes we use. This keeps families informed whilst also providing opportunities for feedback and community involvement.

Our program, planning, assessment and reporting is based upon the Early Years Learning Framework in addition to the Literacy and Numeracy Indicators. Families are provided with information on a regular basis, regarding their child's progress at preschool.

Our Beliefs

We believe that:

1. Each child is a unique individual, with particular talents, strengths, interests and needs.
2. Children learn best in an environment that recognises the importance of play whilst also providing planned experiences designed to develop specific skills, knowledge and attitudes.
3. Children have the right to be in a safe, supportive and caring learning environment which respects social and cultural diversity.
4. The relationship between home and preschool supports and enhances children's learning.
5. Practices related to responsible environmental management begins at an early age.
6. Learning is continuous and encompasses experiences and interests from home, school and the wider community.
7. The role of staff is to facilitate, support, monitor and assess children's learning and share this information with families on a regular basis.
8. Play is an integral part of preschool learning. Through play, we aim to develop learners that actively participate, contribute fairly and equally in the learning environment, display confidence in their decision-making processes and display higher-order thinking skills as a basis for intentional teaching and learning.

9. At Fairview Park Preschool, we believe that staff are lifelong-learners as well. We, as a staff embrace new learning so that we can grow together. We accept the rigour and challenges within early learning. We challenge our children within a safe and supportive environment. Our beliefs are reflected in our philosophy statement:

Preschool Statement of Philosophy

	Children are at the heart of everything we do.
	Reflect for continuous improvement
	Use an inquiry approach
	Learn through purposeful play
	Develop collaborative relationships
	Value the learning environment



Playgroup

The playgroup is:

- held on Friday mornings between 9:00am - 11:00am
- an opportunity for children to have fun, learn how to share through play, discover how to get along with other children, learn and develop new skills, listen to music and stories, improve their abilities to solve problems, explore through play with water and sand, playdough, puzzles, books, games, etc
- led and organised by an SSO staff member
- a contribution of \$2.00 per session
- insured by compulsory insurance - details are available at [Playgroup SA](#)

Preschool Enrolment

In partnership with the Federal Government, children can do 15 hours of preschool per week for four terms commencing the year prior to school enrolment. From 2023, the Department for Education (DfE) commenced two enrolment times each year. Further details are available at the DfE website <https://www.education.sa.gov.au/>.

Preschool Fees

Preschool fees are currently set at \$220 per semester. These are to be paid upon receipt of an account at the beginning of each semester. This amount supplements government funding and helps pay for materials/resources such as paint and paper, equipment, cooking ingredients, etc.

Preschool Sessions

Sessions are available Monday to Wednesday. Usual attendance consists of two days and one morning each week. Session times are:

- Monday 9:00am - 3:00pm, Tuesday 9:00am - 3:00pm Wednesday 9:00am -12:00pm

Preschool Curriculum

At Fairview Park Preschool, we use the following curriculum documents to plan for and assess children's learning:

Early Years Learning Framework:

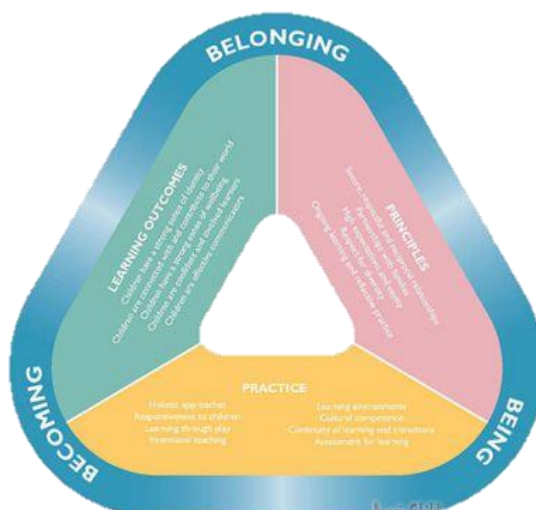
Outcome 1: Children have a strong sense of identity

Outcome 2: Children are connected with and contribute to their world

Outcome 3: Children have a strong sense of wellbeing

Outcome 4: Children are confident and involved learners

Outcome 5: Children are effective communicators



Literacy and Numeracy Indicators

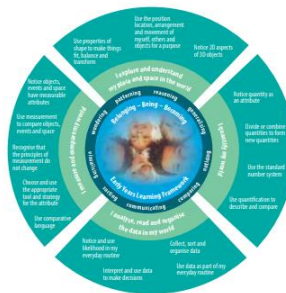
The Literacy indicators are:

- I use language to connect with my world
- I understand the language of my world
- I engage with texts and make meaning
- I represent my world symbolically.

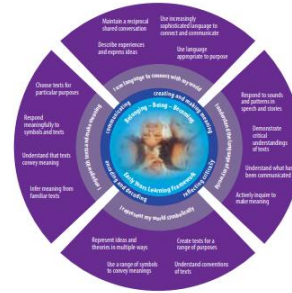
The Numeracy indicators are:

- I explore and understand my place and space in the world
- I measure and compare my world
- I analyse, read and organise the data in my world
- I quantify my world.

Numeracy key elements



Literacy key elements



Preschool Program

The preschool is staffed by qualified and experienced Early Childhood Educators. A balanced program of free play and intentional learning provides important opportunities for the development of knowledge, skills and attitudes in areas including self and social development; communication skills; health and physical development; technology; creativity; literacy; and numeracy.

During the preschool session, children participate in play opportunities and planned activities in a secure and challenging environment enriched by stimulating resources, conducive settings and sensitive intervention. Outdoor learning areas further enhance the program. The preschool grounds are extensive, allowing children to explore their environment freely and safely.

Learning Inquiry

Throughout the embedded enrolment process, child and family background information is collected, which is used to support the identification of needs, strengths, interests, knowledge and past experiences.

Reporting

Children's learning and development is identified, assessed and documented by Educators and communicated with families via a formative report in a child's second term of learning and a Statement of Learning in their fourth term of learning.

In their first term of preschool, families are invited to attend a 'meet and greet' with your child's preschool teacher(s) (also known as a reverse interview). 'Opportunities to Talk' are then offered in the third term of preschool to discuss your child's interests, areas of strength and learning goals. This meeting also provides families with the opportunity to discuss any concerns or questions and to provide feedback.

At the end of the preschool year, families will receive their child's Statement of Learning, and class allocation for school. A copy of your child's report will also be sent to the Reception Teacher.

Communication

Families are kept well informed through Class Dojo. Preschool and school newsletters, weekly reminders, programs and event information is updated regularly for families to view. Parent Pockets located outside the preschool entrance door are used to communicate any hard-copy notices, injury reports and wet clothes notifications. The Qkr! App is also used by the School Canteen (for lunch orders) and Front Office (for payment of fees). We also have a Facebook page informing parents of upcoming events.

Family Involvement

Parents are a valuable resource and an asset to the preschool program and are always welcome. The most important way families can help their child, is to be interested and involved in what their child does at preschool. The time families wish to stay with their child in the preschool is at their discretion – we recognise the fact that some families have very busy lifestyles, so please choose what feels most comfortable.

Families may wish to help on a particular day, or with some preparation jobs. Attending the School Volunteer training, obtain a Responding to Risks of Harm, Abuse and Neglect (RRHAN) Online Training Certificate and a Working with Children Check (WWCC) is a pre-requisite prior to any volunteer work. For information on how to do this, please speak to the friendly staff in the school's front office.

Behaviour Education

Our Behaviour Education Policy aligns with the school Behaviour Policy which aims to assist children in accepting responsibility for their own behaviour and to ensure a safe, caring environment. We spend time discussing and establishing expectations for safety and wellbeing in the preschool. Copies of all our policies are kept in the parent folder which is stored on the shelf outside the main door.

Our rules include:

- playing and working co-operatively
- respecting others' feelings and property
- listening to others.

Whole School Activities

As a school-based preschool, regular involvement with the rest of the school provides many benefits for children ensuring smooth transition from one learning phase to the next.

This is achieved by:

- preschoolers visiting reception classes and school students visiting the preschool
- close working relationships between the school principal, deputy principal and other teachers
- sharing resources, equipment and areas in the school such as the Resource Centre, Computer Suite, Playgrounds and Nature Play area
- preschool children making fortnightly visits to the Resource Centre to borrow books to take home
- preschoolers participating in fortnightly computer sessions designed to develop Information Communication Technologies (ICT) skills
- attending assembly and working with a buddy class to present at assembly
- sharing special days and events together such as Sports Day, Book Week, assemblies.

Notifications of school visits will be shared on Class Dojo before the visit.

Transition to Reception

The school transition program plays an important role in ensuring a smooth entry into reception classes for children and parents. The preschool to school visits for children enrolled at Fairview Park Primary occur during Term 2 and 4. These consist of at least 3 sessions which gradually increase in time.

Letters are sent out to families prior to these visits giving further details of the transition program. There is also a family information session before the initial transition visit. Families whose children will be attending other schools should contact the school to arrange transition visits with that school.

Bringing and Collecting Children

Families are requested to bring children inside the preschool grounds when the session begins and sign the attendance sheet kept on the bench near the entrance door. If someone other than a parent or nominated caregiver is planning to collect the child, please advise one of the teachers and write on the daily attendance sheet. The gates generally open before 9:00am, but you are asked to stay with your child until 9:00am.

Prompt pick-up when collecting children is recommended. Children become distressed when their parents/caregivers are late. Please notify the school's front office reception staff for any late pick-ups. Children must also be signed out by parent/caregivers at the conclusion of each day.

Out of School Hours Care (OSHC)

Preschool children are eligible to attend OSHC if there are spaces available. Families with school-aged children are required to submit their bookings for OSHC before the first closure date to secure a spot. This includes Fairview Park Primary School Preschoolers on Mondays and Tuesdays. After the closure date, if spaces are available, Fairview Park Preschool children will be accommodated for Wednesday, Thursday, and Friday. Subsequently, if additional spots remain, families from other schools will be considered. Please see the OSHC vacation care access priority when enrolling your children for more information.

OSHC educators hold duty of care for transporting children between OSHC and preschool. They are signed in and out of preschool by the OSHC educators. Children wear green vests while attending the service so that they are easily identifiable and generally they are grouped together for easier supervision. Extra OSHC educators may be required to provide the correct ratios when preschool children attend. Please advise preschool of OSHC attendance or of any cancellations via Class Dojo or by writing on the sign in sheet. Contact our OSHC director for more information on 8251 6770 or via email dl.1103.oshc@schools.sa.edu.au enrolment forms can be accessed via https://prodadmin.myxplor.com/enrollment_v2/centre/4KpigoC624356FT2CrmdC74hbQ

Health-Related Information Allergies/Medical Conditions

It is vital that staff are notified of any child's allergies and the appropriate treatment. Equally important, is the providing of information to staff if your child has or should develop any form of medical condition whilst enrolled at preschool.

Emergency Record Forms

It is often necessary to contact families quickly in the event of sickness or accident. If you change your address or telephone numbers during the year, either at home or work, please notify the preschool and school promptly.

Health Plans and Medication at Preschool

At times, children with non-infectious medical conditions attend preschool. It is important that for these children a Health Plan written by the relevant medical practitioner(s) is lodged at preschool. For uncommon conditions, families should also speak to the preschool teacher as staff awareness raising/training could be required.

As much as possible, we encourage children to take medication outside of school hours e.g. three times per day can be taken in the morning - before preschool, afternoon - straight after preschool and bedtime. If prescribed medication needs to be taken at preschool the medication should be:

- provided in the original pharmacist container with directions on the label
- bear the child's name on the original label
- have instructions for safe storage
- be handed from adult to adult
- be accompanied by a 'medication authority' to be completed by the authorised prescriber and the parent/guardian
- be no more than a week's supply (except asthma medication).

It is the family's responsibility to provide the required medication. Staff will fill in the medication log and will notify parents if students fail to take their medication.

Toileting

If a child is not toilet trained before starting preschool a Contenance Care Plan from a GP is required.

Immunisation

It's important that children are immunised because it helps to protect them and others from vaccine-preventable diseases. When enrolling children in the preschool a copy of their current immunisation record is required. Find out more about immunisation requirements for early childhood services on the Department for Education website: [Immunisation requirements for early childhood services \(education.sa.gov.au\)](https://www.education.sa.gov.au/immunisation-requirements-for-early-childhood-services)

Absence/Sickness

Children who are ill should be kept at home until they are well again. Please advise the site if children will not be attending their preschool session via Class Dojo or by contacting the school's front office. This information is required for attendance records. If children have a contagious disease such as chicken pox, please advise the staff promptly so other families can be notified. Children's name will be kept confidential in this matter.

For more information please visit:

<https://www.sahealth.sa.gov.au/wps/wcm/connect/public+content/sa+health+internet/conditions/infectious+diseases/exclusion+from+childcare+preschool+school+and+work>

For more information please visit our school website www.fairviewparkps.sa.edu.au

Food and Drinks

Nut Allergy Awareness and School Management

The preschool is a 'nut free' site as several students at our site have a known (and documented) life-threatening allergy to nuts (Anaphylaxis).

Families are asked not to send food to school that contains nuts. This includes peanut butter and chocolate-nut spreads such as 'Nutella'.

Students are encouraged to adopt hygienic practices and wash their hands before eating and are encouraged not to share food.

The preschool has a Nutrition, Food Beverage and Dietary Requirements Policy. We ask that children bring two (2) pieces of fruit or savoury snack (i.e. cheese, vegetables), for morning and afternoon snack. We encourage children to bring a drink bottle filled with water. We will assist children if this becomes empty during the day. On 'special days' (which families will be informed of), children will have the opportunity to bring other types of food, i.e. party food, etc. Children's lunches must adhere to this policy. At Fairview Park Preschool we understand the importance of celebrating milestones such as birthdays, however we kindly ask that families respect our Policy and do not send lollies, chocolates or gifts to be given out to other children. Thank you for your understanding and cooperation with this matter.

Please visit the Rite Bite website for more information.

<https://healthy-kids.com.au/school-canteens/canteen-guidelines/sa-right-bite/>

Clothing and Footwear

Please dress children in clothes that are comfortable, easily managed and appropriate for preschool activities. They need to be able to toilet themselves independently. Where medical conditions or identified disabilities exist, staff will advise of the support intervention available. Shoes, sneakers and sandals are appropriate footwear for the activities children will be involved in. No thongs please.

Preschool T-Shirts, Jumpers & Hats

'Fairview Park Preschool' uniforms are available online from www.spatanschoolworld.com.au. Click on the Fairview Park Primary School logo to place orders. Preschool T-shirts and jumpers come in various colours and sizes. T-shirts, jumpers and hats are optional for preschool; however, they do provide a sense of belonging for children and assist with their preparation for wearing a school uniform.

Sun Safety

Children bring their own hats from home to wear at preschool during Spring, Summer and Autumn. This is for their safety and follows the Fairview Park Primary School Policy regarding the wearing of hats. Wide-brimmed or legionnaire hats which provide protection for both the face and the back of the neck are preferred. Wide brimmed hats with cords are no longer used in DfE schools due to the cords becoming a hazard. Clothing which covers the shoulders is also recommended. In addition, children are required to apply sunscreen when the UV rating reaches 3 or above.

Sleep, Rest & Interoception

Interoception is a sense that helps learners to understand what is going on inside their body. Interoception activities are done as a part of the everyday routine to give children the opportunity to regulate their body. Our sleep and rest procedure is to be read in conjunction with age-appropriate [Red Nose](#) and [Kidsafe SA](#) safe sleeping recommendations. Copies are available from the preschool.

Mobile Phones and Other Electronic Devices

Parents are encouraged to limit the use of personal electronic devices while at the preschool to protect the privacy and safety of all children. While parents may take images of their own child, they must not take images of other children, including when their child is part of a group. These practices help ensure every child's privacy is maintained and support a safe environment for all. This approach aligns with new regulations designed to protect children from risks associated with sharing images and personal information. The full policy can be found in the policy folder at the preschool.

Inclusive Education

The preschool prides itself as an inclusive space for all learners. Should children require additional support, professional advice will be sought and the matter will be discussed in partnership with families. Our site has a range of support services available through (DfE) to ensure early intervention can support all children experience success as they progress through their learning journey.

Policies

The preschool policy folder is available for families to read, and is stored on the shelf outside the main door. Please ask staff for further information.

Child and Family Health Service (CaFHS) Health Check

The Child and Family Health service (CaFHS) will invite families with their children for a health check-up to assess hearing, eyesight, etc. before starting school. Families will be notified when the CaFHS nurse is due to visit the preschool and will be asked to make an appointment time. Alternatively, families may choose to make their own arrangements.

We value the connections between children, families and communities and look forward to sharing our preschool with you.

For further information please contact the school front office on 8251 2717

